

FY 21/22



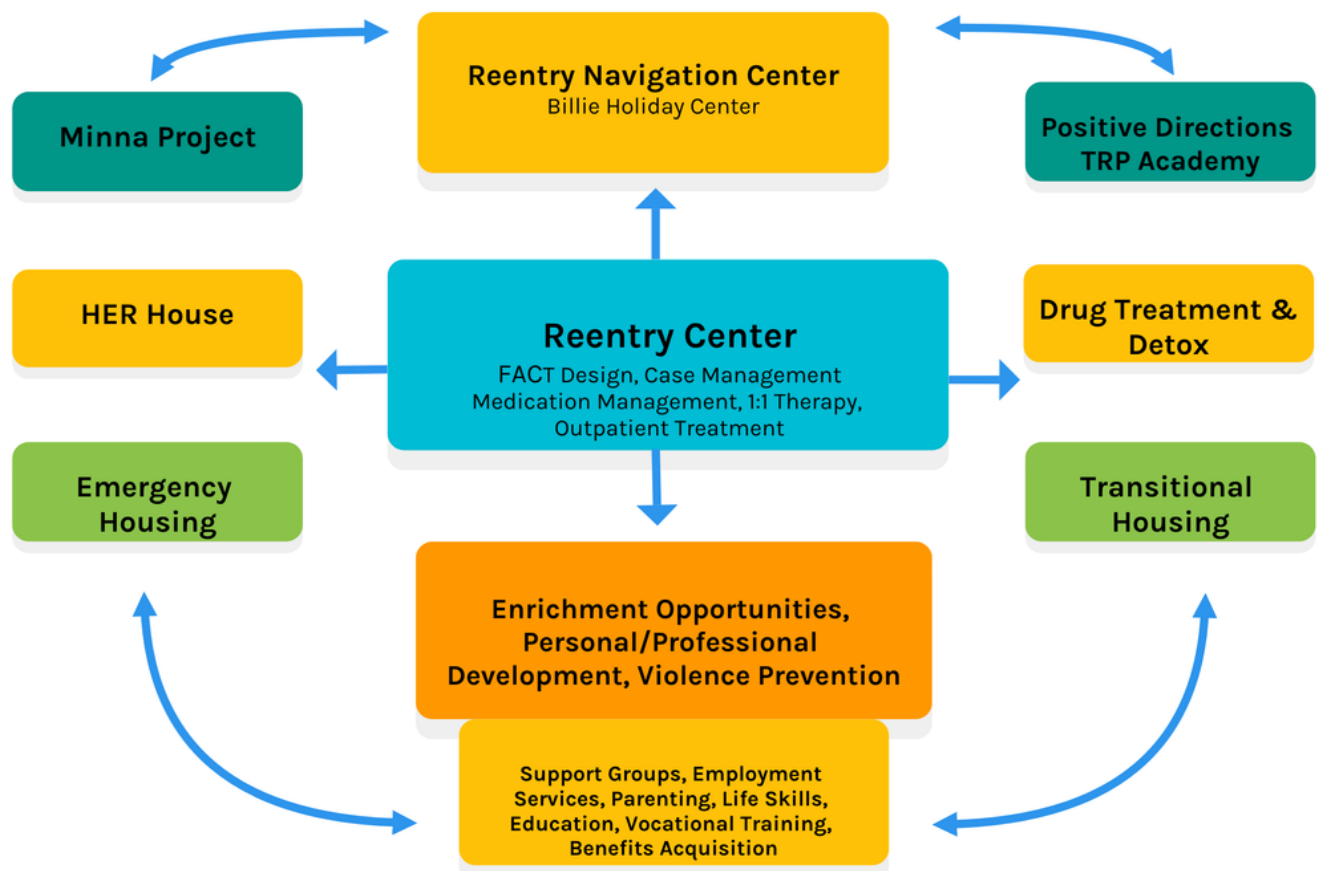
**REENTRY
SERVICES
ANNUAL
REPORT**



**REENTRY DIVISION
SAN FRANCISCO ADULT PROBATION DEPARTMENT**

REENTRY CARE & TREATMENT NETWORK

Through our *Reentry Care & Treatment Network* (RCTN), we designed a portfolio of services to address the dynamic risk factors proven through research to affect recidivism. The innovative and symbiotic nature of our reentry services ensure a holistic approach to rebuilding lives, and promotes the clinical, cultural, and community needs of those we serve. Our clients have traditionally been failed by numerous public systems; in response, we continuously develop programs and systems that are interdependent as a means to improve outcomes, reduce recidivism, and restore the community. Through our RCTN, we are able to advance our mission to "*Protect and Serve the Community, Further Justice, Inspire Change, and Prioritize Racial Equity so that all People May Thrive.*"





THE JOURNEY



I CAN RECOVER AND HAVE A GREAT LIFE

...I finally reached a point where I couldn't see any other way out of my addiction to drugs and alcohol. I thank God every day that I survived and got a new lease on life. I went to HER House. Through the support of HER House, I started to put my life back together and I couldn't have done it without the strong women who took me in and loved me until I could love myself. Today I'm employed and working towards going to San Francisco State College and I'm thankful to HER House and all the staff for helping me pick myself up and I strive to be a better me every day. I am also very appreciative for all of the services that are offered through the reentry division.

-Rene Guillory

MY LIFE HAS DRASTICALLY CHANGED

Drugs were ruining my life and I couldn't stop. By the age of 21, I'd burned bridges and exhausted all of my resources. My probation officer referred me to Our House, a structured clean and sober transitional housing program funded by the SFAPD. The program taught me how to listen, develop goals, and live drug free. After graduating from Our House, I transitioned to the Positive Directions TRP Academy and then to the Minna Project to offer support for new students. I enrolled in art school to study fashion-design, and am employed at the Positive Directions TRP Academy. I've been clean and sober for almost two years. My life has drastically changed because of the support and programs offered to me by SFAPD, the staff at UCSF/Citywide, and the team from Westside Community Services and Positive Directions Equals Change.



-Lucas Cruz



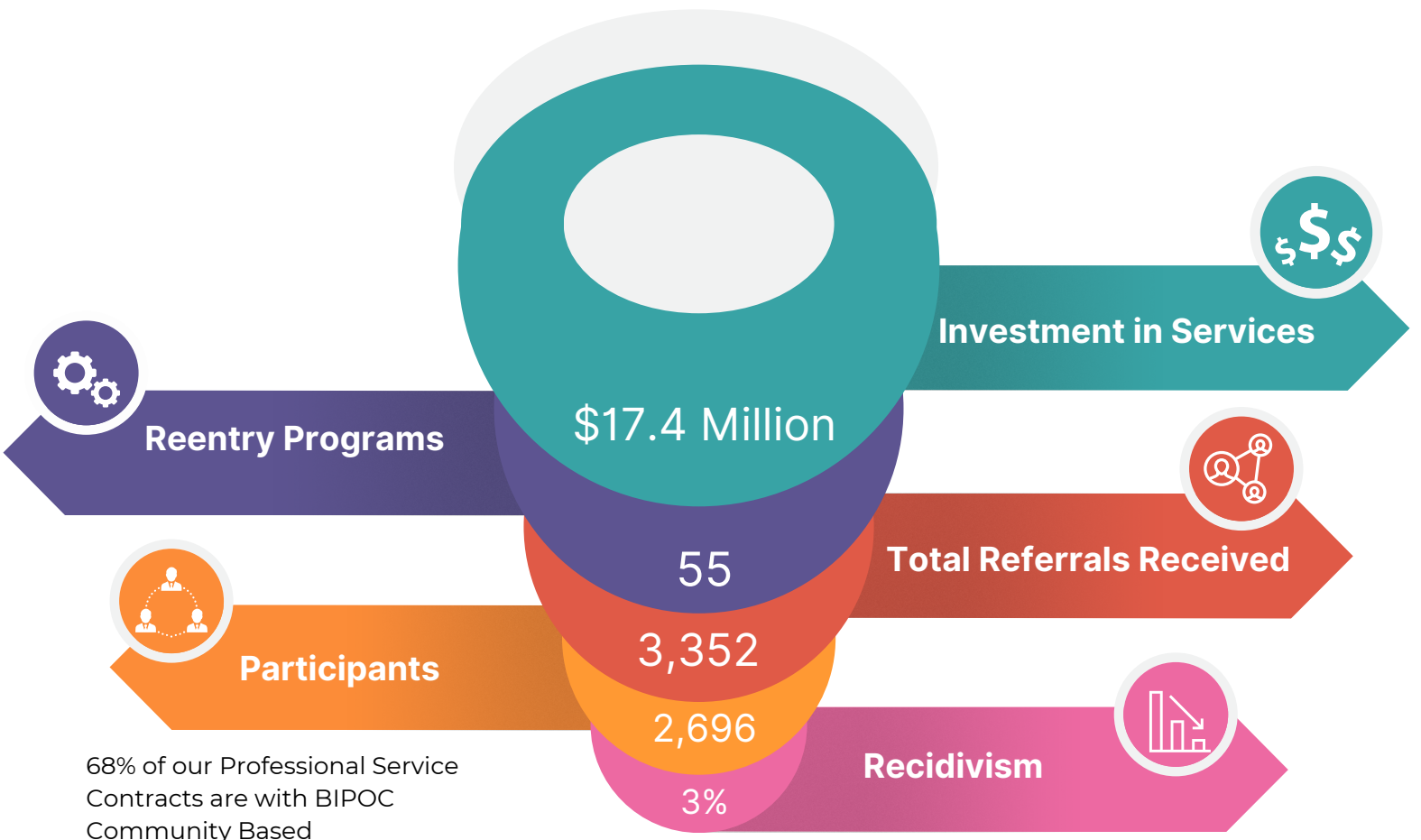
REENTRY & REHABILITATIVE SERVICES

PRIORITIES

- Safely Reduce the Jail Population
- Recovery and Wellness
- Racial Equity

3 NEW INITIATIVES

- Positive Directions TRP Academy
- Billie Holiday Center
- Minna Project

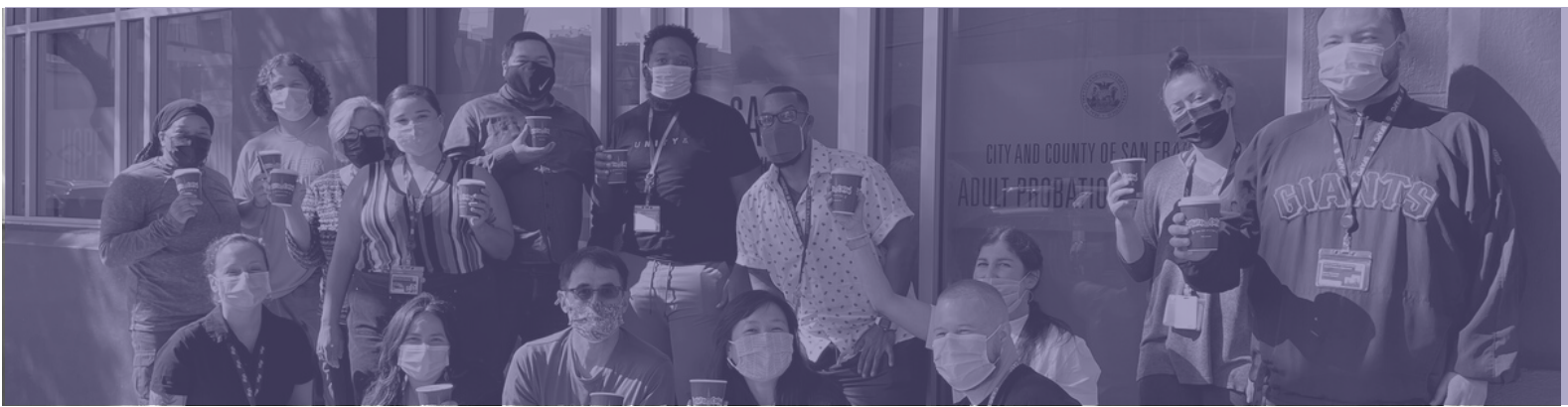


68% of our Professional Service Contracts are with BIPOC Community Based Organizations

THE COMMUNITY ASSESSMENT & SERVICES CENTER

CASC - ONE STOP REENTRY CENTER

The Community Assessment and Services Center is the City's premiere one-stop, behavioral health focused, multi-service reentry center that addresses the needs of San Francisco's justice involved adults.



2476

Justice involved adults visited the CASC



411

SFAPD clients engaged in the CASC's Clinical and Reentry Case Management. Our case management providers (Citywide, SEOP, M3), help clients work toward positive change



101

SFAPD clients engaged in the CASC Medication Management program, helping clients with behavioral health challenges stabilize



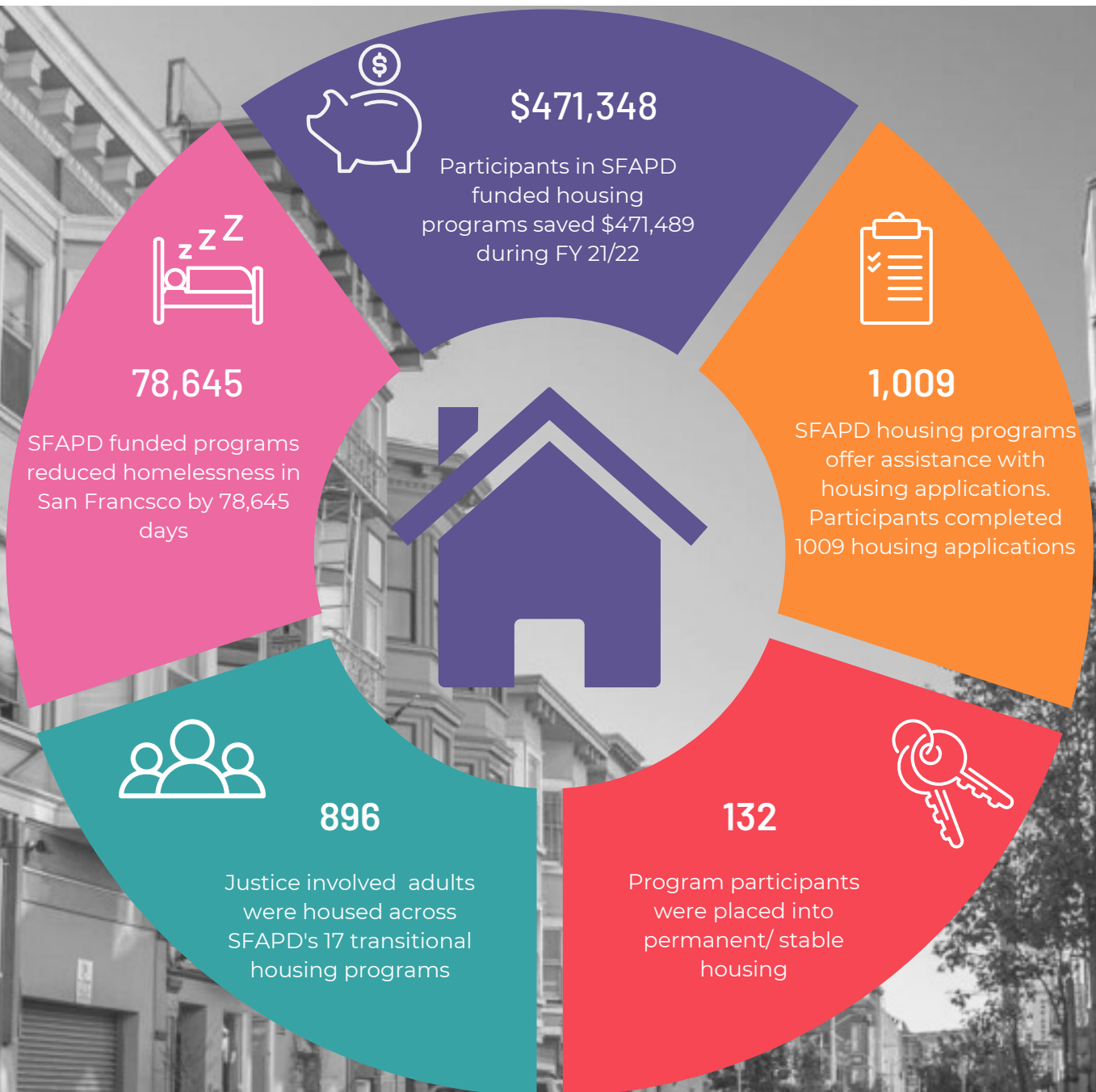
215

Drug Treatment Services are fundamental to life change, 132 SFAPD clients accessed residential treatment and 83 clients access outpatient services

HOUSING PROGRAMS

MORE THAN A PLACE TO STAY

Our programs provide a safe, supportive, and drug free environment for justice involved adults as they rebuild their lives.



EMPLOYMENT PROGRAMS

Building Self-Sufficiency

Employment programs connect people with opportunities that lead to self-sufficiency. From job placement and retention services to subsidized employment and vocational training opportunities, SFAPD is committed to helping our clients achieve economic success.

329

329 clients were Placed in Jobs with the help of the CASC Employment Partners



\$20.10

The Average Hourly Wage of individuals placed in jobs by CASC/Goodwill was \$21.10



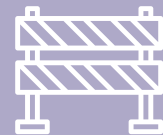
\$53,867

\$53,867 in **Barrier Removal Funds** were used to help clients mitigate employment challenges and provide essential support, which includes union dues, tools, work, clothes, transportation, etc

SFAPD Employment Partners include: SF Goodwill, Young Community Developers, Arriba Juntos, San Francisco Conservation Corps, and UCSF/Citywide

150

150 individuals received Barrier Removal Support



CREATED THE LIFE I ALWAYS WANTED

My journey began in 2020 when I got clean and sober. As the stress of the pandemic weighed on me, I knew I had to change my life. As I reflect on my two years in recovery, my life has changed drastically. I have reunited with my daughter, found an incredible career with SF Goodwill, and have created the life I always wanted. I was recently promoted to lead SF Goodwill's community engagement efforts. I am so grateful for the CASC, Citywide case management and the support of my probation officer.

-Linda Hurshman





PARTNER REFLECTIONS



"As the Director of the Citywide CASC team, I have had the privilege to witness what is possible when all the providers come to the table to help folks truly recover. The San Francisco Adult Probation Department's Reentry Division has established a comprehensive array of services and together, we have formed a community that is dedicated to changing lives. The Reentry Division seeks creative and compassionate solutions to the complex issues our clients face as they exit the criminal justice system."

**-Westley Rutter, LCSW
UCSF/Citywide**

"The Adult Probation Department is doing an amazing job with our transitional housing clients. The CASC is a one-stop resource center providing integrated services to the criminal justice involved community. The CASC Case Management staff are second to none in providing client based services for all our clients. It is a privilege and honor to be a transitional housing provider for the Adult Probation Department. Thank you Reentry for all you do in providing housing, employment, mental health, and substance abuse services for this community!"

**-Richard Beal
Tenderloin Housing Clinic**



"San Francisco Adult Probation Department's Reentry Division is light years ahead of other Probation departments around the country. The Reentry Division funds services designed to help justice involved participants exit the criminal justice system with a chance to succeed and become productive contributors to society."

**-Lou Gordon
Recovery Support Network**





"The San Francisco Adult Probation Department and its Reentry Division lead the nation in client engagement and reentry services. The services they've designed have impacted thousands of San Franciscans. As the Director of the Senior Ex-Offender Program, it brings me great joy to see justice involved people access services that help them reclaim their place in the community, become self-sufficient, and permanently exit the justice system. This department has set the standard for reentry services."

**-Mike Paisley
Senior Ex-Offender Program**

"The San Francisco Adult Probation Department has led San Francisco's recovery and treatment efforts. The Positive Directions TRP Academy is the city's first abstinence-based therapeutic teaching community. While others said it couldn't be done, the SFAPD said, "Yes it can!"

**-Cregg Johnson
Westside Community Services**



"The one city department that has responded to the needs of the community is the San Francisco Adult Probation Department. The collaboration of the San Francisco Adult Probation Department with community service providers is based upon a strong desire to work within the community to identify its needs and to find the resources to deal with these needs in a strategic and comprehensive manner. Westside Community Services/Positive Directions Equals Change want to thank Chief Cristel Tullock and staff especially Steve Adami, Victoria Westbrook and Destiny Pletsch for their commitment to serving justice-involved people who need services in San Francisco."

**-Cedric Akbar
Westside Community Services**





SFAPD FUNDED SERVICES

ONE STOP REENTRY CENTER

Community Assessment & Services Center
UCSF/Citywide

Reentry services, case management, groups, benefits acquisition

EDUCATION

General Education
Five Keys Schools and Programs

GED, High School Diploma

EMPLOYMENT SERVICES

CASC Employment Services
SF Goodwill

CASC Employment Services

Prison 2 Employment Pipeline
SF Goodwill

A partnership between SF Goodwill, Five Keys, OEWD and SFAPD

Interrupt, Predict, Organize
Arriba Juntos

Employment program focused on at risk or in risk Transitional age Young Adults, 18-35

Interrupt, Predict, Organize
Young Community Developers

Employment program focused on at risk or in risk Transitional age Young Adults, 18-35

Job Placement and Training
Citywide Employment Program

Behavioral health oriented employment services

Back 2 Work
San Francisco Conservation Corps

Subsidized employment program with Caltrans

COMMUNITY SERVICE

Restorative Community Service Program
SFAPD

Connection to community service opportunities

CASE MANAGEMENT & MENTORING

Clinical and Reentry Case Management UCSF Citywide	Clinical and reentry case management services, individual and group therapy
Reentry Case Management Mentoring Men's Movement (M3)	Reentry case management, individualized treatment plans
Reentry Case Management Senior Ex-Offender Program (SEOP)	Reentry case management, individualized treatment plans
Community Mentoring Program Mentoring Men's Movement (M3)	Mentoring services to justice involved men

BEHAVIORAL HEALTH SERVICES

Residential Treatment Harbor Lights	Substance dependency treatment and detox
One on One Therapy DPH Clinicians	Psychological assessments and clinical therapy
Containment Model Service Blue Rock Institute (SFFI)	Clinical and treatment services specific to sex-offenders under the containment law
Containment Model Service HOPE Program	Clinical and treatment services specific to sex-offenders under the containment law
Medication Management UCSF/Citywide	Medication prescription and distribution
Crisis Care Westside Community Services	Culturally responsive crisis care services outside the transitional health system

TRANSITIONAL HOUSING

New Horizons Tenderloin Housing Clinic	Clean and sober transitional housing and permanent housing placement
Fof TAYA Housing Program Recovery Survival Network	Transitional housing and supportive services for justice involved individuals, 18-35
Billie Holiday Center Westside Community Services	Short term living space and connections to next step resources

Our House Westside Community Services	Clean and sober transitional housing and permanent housing placement
James Baldwin House Westside Community Services	A behavioral health focused housing program with onsite clinical services
Minna Project Westside Community Services	A dual diagnosis transitional housing program with onsite clinical services
Positive Directions TRP Academy Westside Community Services	An abstinence based therapeutic teaching community for justice involved men
HER House Westside Community Services	Gender responsive transitional housing program for justice involved women
Home Free Five Keys Schools and Programs	Gender responsive transitional housing program
Community Housing Phatt Chance Community Services	Clean and sober transitional housing for APD and other justice involved adults
FoF Stabilization Housing Program Recovery Survival Network	Clean and sober transitional housing and permanent housing placement
Step Up to Freedom Episcopal Community Services	Rapid rehousing/rental subsidy program for justice involved individuals, 18-35
Collaborative Courts Housing Program Tenderloin Housing Clinic	Clean and sober transitional housing for clients of the Collaborative Courts
Emergency Housing Senior Ex-Offender Program (SEOP)	Clean and sober transitional housing and permanent housing placement

ENRICHMENT OPPORTUNITIES

Fathers Matter Adult Probation Department	Parenting program focused on life skills, parenthood and healthy relationships
Mothers Matter Adult Probation Department	Parenting program focused on life skills, parenthood and healthy relationships
Women Support Group Solutions For Women	Process group which addresses barriers to reentry for justice involved women

<p>Trauma Informed Groups/Workshops Inside Circle</p>	<p>Trauma informed workshops to transform and heal justice involved people</p>
<p>Life Skills Gloria's Gifts</p>	<p>Life skills training classes for justice involved adults, focusing on 18-35 year olds</p>
<p>Women Support Group Sister Circle</p>	<p>A space for women to share experiences, expand their support network and set goals</p>
<p>CASC Benefits Acquisition Human Services Agency</p>	<p>Enrollment into Medi-Cal, CalFresh and General Assistance</p>
<p>Community Circle Healing Circles for Soul Support</p>	<p>Healing group that offers support and effective tools to deal with life's challenges</p>
<p>Man Alive/Batter' Intervention Program Community Works West</p>	<p>Court mandated program designed to reduce and prevent domestic violence</p>
<p>Batters' Intervention Program Glide</p>	<p>Court mandated program designed to reduce and prevent domestic violence</p>
<p>TLC Reentry Outreach Code Tenderloin</p>	<p>Reentry outreach services at the Tenderloin Linkage Center</p>



OUR TEAM



Steve Adami
Director, Reentry Division



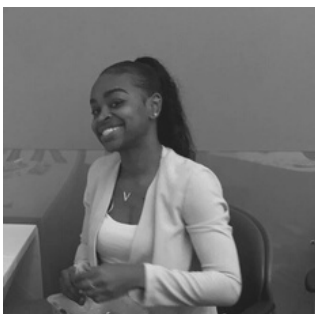
Destiny Pletsch
Reentry Services Manager



Victoria Westbrook
Reentry Policy Planner



Daniel Alvarenga
Probation Assistant



Da'vonna Smith
Probation Assistant



Eric Rudisill
Probation Assistant





With all of the challenges we've faced as a community and nation over the past two and a half years, it's important to reflect on the amazing work of our community partners and the success of our reentry programs. Highlights from FY 21/22 include the launch of the Positive Directions TRP Academy, an abstinence-based therapeutic teaching community; the Billie Holiday Center, a reentry navigation center; and the Minna Project, a dual diagnosis transitional housing program with onsite supportive services. Through our Reentry Care & Treatment Network we continue to infuse bold strategies to help those we serve reclaim their lives and achieve their dreams.

Steve Adami, MPA

Director, Reentry Division
San Francisco Adult Probation Department



564 6th Street, SF, CA 94103



415-489-7300



www.reentrysf.org